

INNOVATIVE & TECHNOLOGY
MANUFACTURERS



CORPORATE PROFILE



SAFVOLT SWITCHGEARS PRIVATE LIMITED



SAFVOLT SWITCHGEARS PRIVATE LIMITED

**7/174, Vellanaipatti Post, Kalapatti Via,
Coimbatore – 641048. INDIA.**

www.safvolt.com

Estd. : 2000



Mission <<

Our mission is to deeply recognize the needs of our clients who are constantly searching for the latest technologies and new ways of thinking to make the best project decisions. We continuously develop our knowledge and expertise and apply them in helping our Clients in their business activities.

Vision <<

Our vision is to be a highly successful LV & MV Switchboard Manufacturing company in electric world and to provide wide range of services in the field of power generation, transmission and distribution, electricity market and power quality.

Values <<

Excellence : We vow to do our best to exceed our customers expectations.

Integrity : We pride ourselves in being honorable, Sincerity and credible.

Innovation : We are passionate about creating new solutions for crafting a better tomorrow for our Country.

Leadership by example : A commitment to set standards for our business and transactions based on mutual trust.



SAFVOLT, a Circuit Breakers Exporter in India. With Electrical Switchgears products and solutions comes together the state-of-the-art technology and innovations, you get a product as refined as SAFVOLT. Our aim is to be the benchmark in the industry on quality, reliable, user friendly yet competitive solutions.

When you choose SAFVOLT, we guarantee you of our expertise in Circuit Breakers and other electrical products to find the solutions you need among our innovative applications. You get access to our large selection of innovative Circuit Breakers and customized designs to build solutions and configure systems that make the most of the latest breakthroughs in technology.

Owing to the superior quality of our products, we have received ISO 9001:2015 certification from TUV – Germany. Our organization has a huge distribution network spread across the Middle East and the Indian Subcontinent, which enables us to timely deliver the consignments.

SAFVOLT Group spends each year 6% of its revenue on Research & Development for innovation and managing costs. As the largest core business in the electrical industry. SAFVOLT, a Circuit Breakers Exporter proposes innovative and competitive solutions to improve control of electricity, reduce consumption and eco-friendly.

We have maintained the required standards in our business process, which has enabled us to deliver superior quality Electrical Products such as Circuit Breakers. Today, SAFVOLT is committed to meeting the challenges of the new economy through business ethics, global reach and technological expertise.

PROCESS

Our ability to produce high-quality products is directly linked to the standards we adapt and sophisticated processes we use. This is learned by years of experience, by various experiments to meet the needs and expectations of our clients.

BUSINESS PROCESS

We have maintained the required standards in our business process, which has enabled us to deliver superior quality Electrical Products. After numerous research and experiments, we have been successful in meeting the expectations of the clients. We conduct extensive planning before starting any project, so that the desired result can be achieved. The various stages of our business process are listed below:

- ▲ Design and development
- ▲ Systematic process flow
- ▲ Sourcing
- ▲ Work allocation
- ▲ Operating methods
- ▲ Stage control
- ▲ Reduction in rework / rejection
- ▲ Customer view
- ▲ Timely delivery

We are able to complete our assigned projects within the stipulated period of time owing to our proven systems.



We are one of the prominent name in the industry, engaged in offering a quality range of Electrical Products. These products are superior in quality and cater to the requirement of diverse industries. Some of the places where our range of products finds application are :

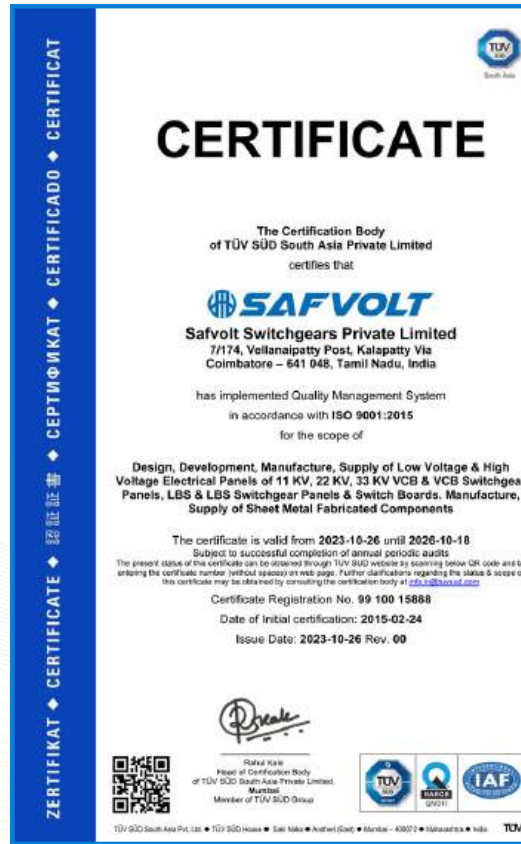
- ▲ Power sector
- ▲ Engineering industry
- ▲ Software
- ▲ Telecoms sector
- ▲ Textile mills
- ▲ Windmills
- ▲ Sugar mills
- ▲ Cement industry
- ▲ Paper industry
- ▲ Dying
- ▲ Oil industry
- ▲ Temples
- ▲ Substations



Our organization is backed by a team of dexterous professionals, which helps in conducting our business operation in a well-organized manner. We select our professionals after complete evaluation of their skills and industry experience. Our well framed recruitment process enables us to select the best industry professionals. In our team, we have the following professionals :

- ▲ Production Engineers
- ▲ Product Designers
- ▲ Quality Control Engineers
- ▲ Allied Technicians
- ▲ Skilled Workers

Owing to the combined efforts of our professionals, we are able to come up with quality range of Electrical Products. Moreover, these professionals also maintain close coordination with the clients while executing the turnkey projects.



- ▲ Capabilities review
- ▲ On-site visit
- ▲ Production capacity
- ▲ Process controls
- ▲ Certification
- ▲ RFQ
- ▲ Drawings (2D/3D) & golden samples
- ▲ Design for Manufacturability (DFM)
- ▲ Raw material certifications
- ▲ First Articles Inspection (FAI)
- ▲ Function & performance testing
- ▲ Final packaging validation
- ▲ Certificate of conformance
- ▲ Part production approval Process (PPAP)
- ▲ Engineering Change Notification (ECN)
- ▲ Engineering Change Request (ECR)
- ▲ Document Control
- ▲ Pre-shipment Inspection (PSI) report
- ▲ Corrective action reports (8D/A3)
- ▲ Quarterly business review
- ▲ KPI measurement
- ▲ Continuous improvement
- ▲ Risk management



OUR MANUFACTURING UNIT

SAFVOLT, a Vacuum circuit breaker manufacturers and exporter. We have a state-of the-art manufacturing unit, which is spread in a vast area of 65,000 square feet. Our manufacturing unit is equipped with latest machines, which are operated by our expert workers. We have 100% in-house capacity to manufacture all types of panels.

BUSINESS PROCESS

We have a sophisticated research & development wing, where extensive research activities are undertaken. This unit is backed by a team of R&D expert, which uses different types of research methodology to add new dimensions to our existing range of Electrical Products. Our R&D expert works in close coordination with the production team, so that new techniques can be applied in the manufacturing process. The research activities of our organization are conducted on the basis of the following parameters:

- ▲ Raw material used
- ▲ Technology applied
- ▲ Manufacturing process undertaken



We have a capacious warehouse spread in an area of 5000 sq. ft., where our range of Electrical Products like Vacuum circuit breaker manufacturers is stored in required quantity. Our warehouse is divided into different sections that help us in arranging the products according to the category. Each section is labeled properly, which facilitates easy retrieval of products during dispatch. We have employed efficient supervisors to manage all kinds of inventory in our warehouse. Our warehouse is situated in a strategic location well connected by different modes of transport such as air, road and sea. This helps us in timely delivery of the consignments.



Equal emphasis is also laid on the packaging of products and we use superior quality packaging material for this purpose. We provide sea worthy wooden packaging to our export items, so that these remain safe during transit. Moreover, for local transportation, we provide bubble packaging with wooden flat form. Customized packaging is also provided as per the requirements of the clients.



| | |
|-----------------------|---|
| Name | SAFVOLT SWITCHGEARS PVT LTD |
| Address | 7/174, VELLANAIPATTI – POST, KALAPATTI – VIA, COIMBATORE – 641 048, TAMIL NADU, INDIA. |
| Geographic Location | OFFICE AND SWITCHGEAR FACTORY IN COIMBATORE AND VERY NEAR TO COIMBATORE AIRPORT IN NH 47 AVINASHI ROAD |
| Telephone Number | +91 98439 98437 |
| Mobile Numbers | +91 98430 82837, 96552 20401 |
| Email Address | vijay@safvolt.com, tender@safvolt.com |
| Date of Establishment | 01/04/2000 |
| GSTIN | 33AAHCM0555E1ZU |
| IE Code | 3206025320 DATED 28/03/2007 |
| UDYAM | UDYAM-TN-03-0004116 |
| Factory License | 2816 |
| PAN | AAHCM0555E |
| Certificates | QUALITY MANAGEMENT CERTIFICATE ISO 9001 – 2015 BY TUV |

Factory Facilities



| DESCRIPTION | DETAILS |
|--|--|
| Factory total covered area | 25800SQFT |
| Uncovered area | 25000SQFT |
| Storage area | 3500SQFT |
| Canteen area | 700SQFT |
| Staff quarters area | 3200SQFT |
| Power House & DG room | 200SQFT |
| Office area with centralized A/C arrangement | 200SQFT |
| Capacity of the factory | LV panels 400 / year HV panels 400 / year |
| Handling facility | 3ton EOT crane and pallet trucks |
| Year of commencement of production | 2000 |
| Working time / shift | 8.30 am & 5.30pm 5.30pm & 10pm |
| Power supply | 150HP for power loads 50kVA for welding loads |
| Standby power supply | 125kVA Ashok Leyland DG set |
| Solar Power Supply | 100kW Grid Connected |
| Total Organization Strength | 150 Employees |



| DESCRIPTION OF THE MACHINE | QUANTITY |
|--|----------|
| FARLEY LASER CNC Laser Cutting machine | 1 Set |
| AMADA make Multi station CNC Turret punching machine | 1 Set |
| H&H CNC shearing Machine size 3m width | 1 No |
| AMADA make 120TON CNC Press Break 3000mm length | 1 No |
| AMADA make 35TON CNC Press Break 1200mm length | 1 No |
| 100TON Hydraulic Press | 1 No |
| Hydraulic 160TON NC Press Brake 3m Width | 1 No |
| APG Epoxy Moulding Machine with Vacuum Tanks | 1 No |
| No.10 Fly Press | 1 No |
| No.07 Fly Press | 1 No |
| EIFOC Pillar Drill | 3 Nos |
| EIFCO Bench Drill | 1 No |
| L&T make MIG Welding Set | 8 Nos |
| Spot Welding Machine | 1 No |
| Ingersoll-Rand Air Compressor 15 HP | 1 No |
| ELGI Screw Compressor 25 HP | 1 No |
| Bench Grinder 0.75HP | 1 No |
| Air Cooled Welding Transformer | 9 Nos |
| Hacksaw cutting machine | 1 No |
| Hitachi Portable abrasive cutting machine | 6 Nos |
| Electronic Platform Weighing Scale 500kg | 1 No |



| DESCRIPTION OF THE MACHINE | QUANTITY |
|--|-------------|
| 125KVA Gen set with Kirloskar Engine | 1 No |
| Sunrise Iron Worker Machine | 1 Set |
| CNC Busbar Fabrication Machine | 1 Set |
| BUTT Welding Machine | 1 Set |
| MCB DB Production Line | 1 Set |
| Fully Automated Conveyorized Powder Coating Process Unit | 1 No |
| Powder Coating, Pre-treatment line consisting of loading platform, KOD, Degreasing Tank, Water Rinsing Tank, DE. Rusting Tank, water rising tank, Activation Tank, Phosphating Tank, water rising tank, Passivation Tank, Drying oven with automation powder coating GUNS, OVENS, GAS Fired equipments with complete conveyor Systems Dust Extraction Units etc. | 1 Full line |
| Loading & Unloading Monorail Gantry Crane with 3.0-ton wire Rope Electric Hoist | 1 No |
| Grave Graph Computerized Engraving Machine | 1 No |
| Computerized Labelling system and Cutter | 1 No |
| Automated TIN Plating Unit with pre cleaning unit | 1 No |



| DESCRIPTION | QUANTITY |
|--|----------|
| 3phase Secondary Injection test kit 0-25Amps range 0 - 430volts AC / 0- 250V DC | 1 Set |
| DC – Source – 0 – 250Volts | 1 Set |
| HV test kit – 0-10KV range | 1 Set |
| HV test kit – 0-100KV range | 1 Set |
| Tong tester 0- 5000Amps | 2 Nos |
| VCB / LBS - TEST Analyzer | 1 No |
| Primary Current Injection and Temperature Rise Testing Kit 4000A 1 Ph | 1 No |
| Contact Resistance Meter | 1 Set |
| 5kV Insulation Tester | 2 Set |
| Vernier Caliper | 10 No |
| Screw Gauge | 10 No |
| Powder Coating Thickness Gauge | 3 Set |
| Tubular Impact Tester | 1 No |
| PH Testers | 1 No |
| TDS Meters | 1 No |
| Bend Tester | 1 No |
| Resin Mould Insulators Testing Kit | 1 Set |
| Powder coating line complete test kit | 1 Set |
| Surface Table | 2 Set |
| LBS Load Tester | 1 Set |
| VCB Load Tester | 1 Set |
| Simulation Tester | 1 Set |

MV Products



12KV - Indoor VCB Panel



12KV - LBS Panel



22KV - VCB Panel



22KV - LBS Panel



12KV-36KV Compact Sub Station



11KV VCB Panel - Overall View



22KV VCB Panel - Overall View



Lineup Panel

MV Products



24KV - Indoor VCB Panel



36KV - Indoor VCB Panel



12KV-36KV Outdoor VCB Panel



12KV-36KV Control & Relay Panel



CSS Panel UPTO 2500KVA



Segment DB



Main Panel / PCC Panel



Sub Switch Board

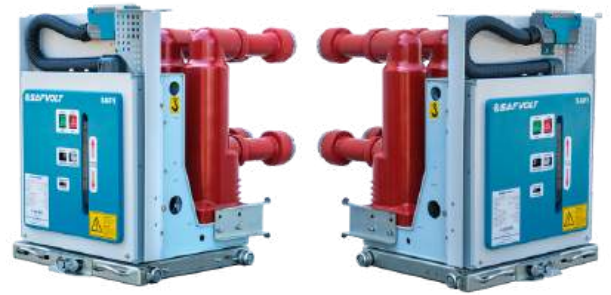


L T Panel

MV Products



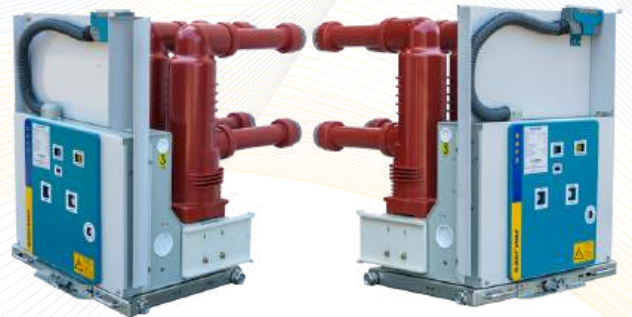
11KV VCB



11KV VCB Group



22KV VCB



22KV VCB Group



33KV - VCB



33KV - VCB Group



VACUUM CONTACTOR - Open Type



VACUUM CONTACTOR - Closed Type



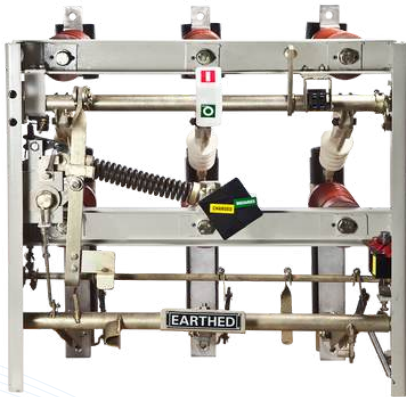
VACUUM CONTACTOR - Open Type Group



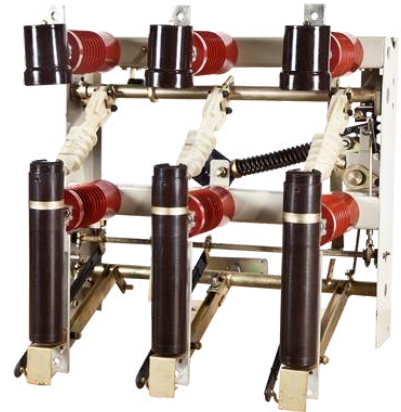
VACUUM CONTACTOR - Closed Type Group



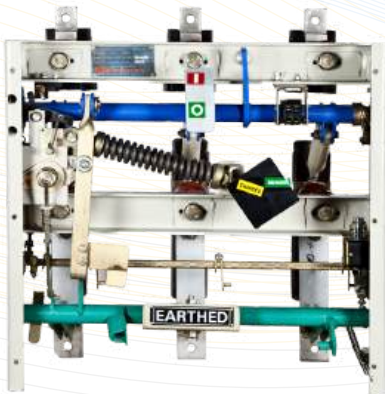
11KV - MOTORISED LBS - Overall View



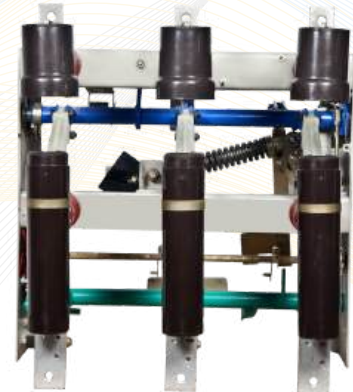
12KV Load Break Switch - Front



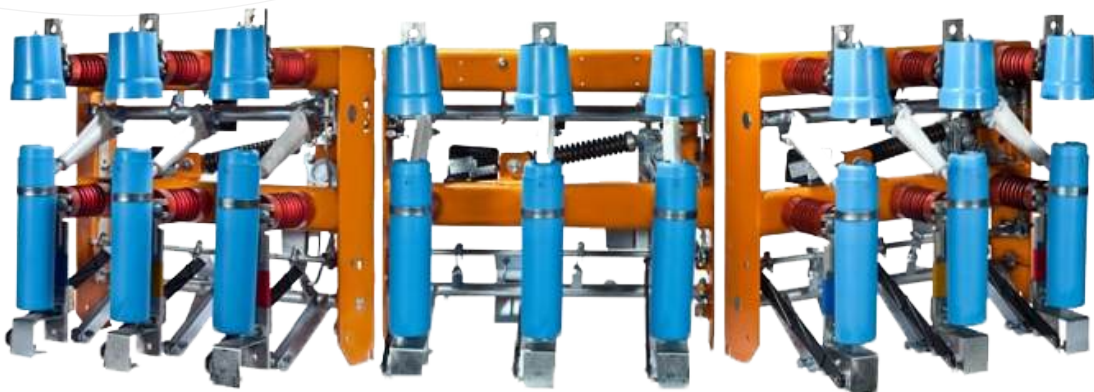
12KV Load Break Switch - Back



24KV Load Break Switch - Front

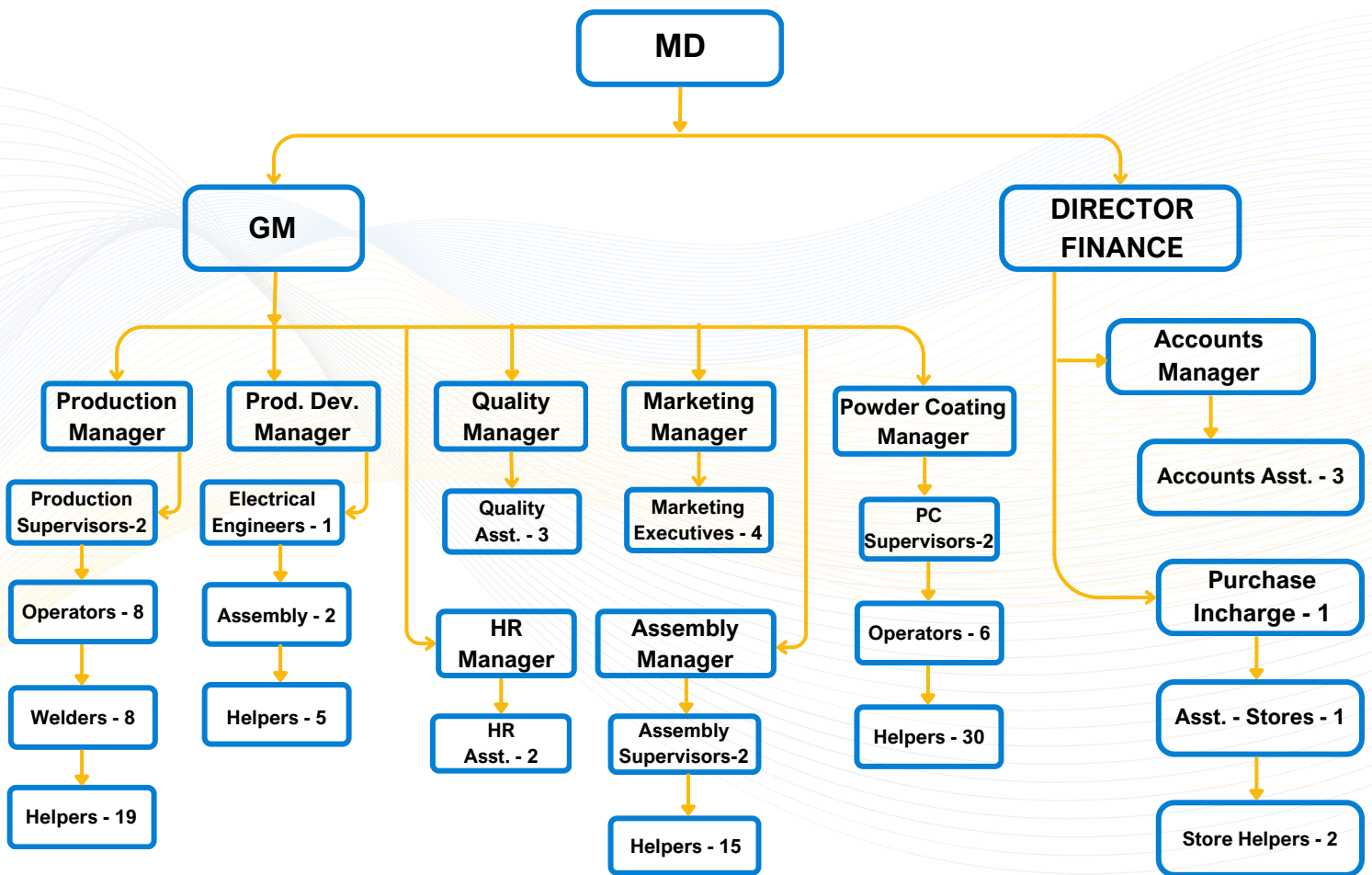


24KV Load Break Switch - Back



36KV Load Break Switch - Group

Organisation Chart



Executed Projects



Client : NLC India Ltd

Projects : Neyveli Mines

Year : 2020 - 2023

Nature of Works : Supply Erection
Installation & Commissioning of 11kV
Substation



Client : Himachal Pradesh State
Electricity Board Ltd

Projects : Substation in Mandi,
Dharamshala, Kangra, Shimla, Hamirpur

Year : 2011 - 2022

Nature of Works : Supply Erection
Installation & Commissioning of 11kV 22kV
& 33kV Substation



Client : Indian Railways

Projects : Chennai (Southern Railways)

Year : 2023 - 2024

Nature of Works : Supply Erection
Installation & Commissioning of LT & HT
Panels

Executed Projects



Client : Bharat Heavy Electrical Limited

Projects : EDP(Bangalore), PVUNL (Jharkhand), Nagpur, Chennai, 3X800MW Thermal Plant (Udangudi), Hyderabad, 1X800MW TANGEDCO (Uppur), HP Boiler Plant (Trichy)

Year : 2020 - 2023

Nature of Works : Supply Erection Installation & Commissioning of 11kV 22kV & 33kV VCB Panels and Compact Sub Stations



Client : IREL India Limited

Projects : Kanyakumari, Ganjam - Odisha

Year : 2018 - 2023

Nature of Works : Supply Erection Installation & Commissioning of 11kV Switch board and Compact Substation



Client : Rajiv Gandhi Centre Aquaculture

Projects : Sirkali

Year : 2018 - 2019

Nature of Works : Turnkey project



Client : NMDC Ltd

Projects : BIOM (Bahçeli), DIOM (Donimalai)

Year : 2018 - 2022

Nature of Works : Supply Erection Installation & Commissioning of 11kV Switch board and 11kv Motor Control center

Major Customers





 SAFVOLT LIMITED, UK

 SAFVOLT AMERICA LLC, USA

 SAFVOLT MIDDLE EAST LLC, DUBAI

One stop solution for quality switchgears products



Manufactured by:

SAFVOLT SWITCHGEARS PRIVATE LIMITED

7/174, Vellanaipatti Post,
Kalapatti Via,
Coimbatore - 641048, INDIA.

T : +91 97866 10086, 98439 98437

E : sales@safvolt.com

W : www.safvolt.com



ISO 9001-2015 COMPANY



Tested at
NABL
Accredited labs

All other accessories shall be provided as per our standard. Please specify for any specific accessory requirement. Copyright © 2019 **SAFVOLT Switchgears Private Limited**. The data given in this catalogue are subject to change without notice